

NOTE: SEE PLAT ONE AND THREE FOR ANY FURTHER INFORMATION.

SEPTIC NOTE

THE 10,000 SQUARE FOOT SEPTIC AREAS SHALL REMAIN UNENCUMBERED BY BUILDINGS, EASEMENTS, RIGHTS-OF-WAY AND OTHER PERMANENT OR PHYSICAL OBJECTS.

PRIVATE ACCESS EASEMENTS BOUNDARY LINE TABLE

LINE	BEARING	LENGTH
1	S.71°21'03"E	40.00'
2	S.78°17'17"E	40.00'
3	N.35°52'47"W	39.00'
4	N.75°17'17"W	25.00'
5	S.14°42'43"E	36.00'
6	S.14°42'43"E	36.00'
7	S.75°17'17"E	25.00'
8	S.81°07'11"E	39.00'
9	N.75°17'17"W	40.00'

BOUNDARY LINE TABLE

LINE	BEARING	LENGTH
1	S.71°21'03"E	40.00'
2	S.87°57'49"E	77.00'
3	N.63°21'39"E	45.00'
4	N.32°14'15"E	40.00'
5	N.20°46'44"E	18.00'
6	N.33°58'46"E	159.52'
7	N.49°45'22"E	36.52'
8	N.67°15'12"E	37.70'
9	S.89°34'32"E	21.26'
10	S.69°49'52"E	14.33'

REVISED FOREST CONSERVATION BOUNDARY LINE TABLE

LINE	BEARING	LENGTH
1	N.73°12'42"E	90.00'
2	S.54°43'37"E	747.44'
3	S.81°26'38"E	221.91'
4	S.60°45'20"E	55.00'
5	S.24°16'11"W	671.38'
6	S.69°49'52"E	14.33'
7	S.89°34'32"E	21.26'
8	N.67°15'12"E	37.70'
9	N.49°45'22"E	36.52'
10	N.33°58'46"E	159.52'
11	N.20°46'44"E	18.00'
12	N.32°14'15"E	40.00'

REVISED FOREST CONSERVATION BOUNDARY LINE TABLE

LINE	BEARING	LENGTH
13	N.63°21'39"E	45.00'
14	S.87°57'49"E	77.00'
15	S.71°21'03"E	40.00'
16	N.16°47'18"W	520.66'
17	N.83°46'55"E	111.88'
18	N.76°36'45"E	66.99'
19	N.87°55'09"E	49.60'
20	S.54°16'47"E	29.47'
21	N.88°57'51"E	34.71'
22	S.61°58'56"E	22.76'
23	S.73°49'28"E	37.30'
24	S.41°43'44"E	19.37'
25	S.66°45'10"E	26.93'
26	S.61°42'31"E	45.89'

REVISED FOREST CONSERVATION BOUNDARY LINE TABLE

LINE	BEARING	LENGTH
27	N.47°41'47"E	38.83'
28	S.75°17'17"E	121.69'
29	N.24°16'11"E	202.82'
30	N.75°17'17"W	141.97'
31	N.30°23'54"W	50.67'
32	N.70°14'43"W	106.97'
33	S.22°28'22"W	79.90'
34	N.75°17'04"W	76.04'
35	N.14°42'43"E	105.75'
36	N.87°27'15"W	48.35'
37	N.79°21'56"W	132.26'
38	N.64°28'03"W	46.41'
39	N.57°17'08"W	83.61'
40	N.88°42'16"W	100.24'
41	N.16°47'18"W	438.62'

NOTE: △ INDICATES PVT. ACCESS EASEMENT BOUNDARY LINE.

NOTE: ○ INDICATES FLOOD PLAIN EASEMENT AND/OR LOT BOUNDARY LINE.

NOTE: FOR AREAS OF FOREST CONSERVATION EASEMENT TO BE REMOVED AND FOREST CONSERVATION EASEMENT TO BE ADDED, SEE PLAT THREE OF THREE.

STATE OF MARYLAND
D/O LAND & PROPERTY MANAGEMENT E-3
580 TAYLOR AVE, TAVES BLDG.
ANNAPOLIS, MARYLAND 21401
4000-9003-3016
TAX MAP 22, BLK 10, P-198

NOTES: 1. ○ INDICATES REVISED FOREST CONSERVATION EASEMENT BOUNDARY LINE. 2. [Pattern] INDICATES REVISED FOREST CONSERVATION EASEMENT.

I (WE) ASSENT TO AND DO HEREBY JOIN IN THIS RECORD PLAT

WITNESS: *[Signature]* JOHN T. COOK 9/28/10 DATE
WITNESS: *[Signature]* DEBRA A. COOK 4/28/10 DATE

AREA TABULATION

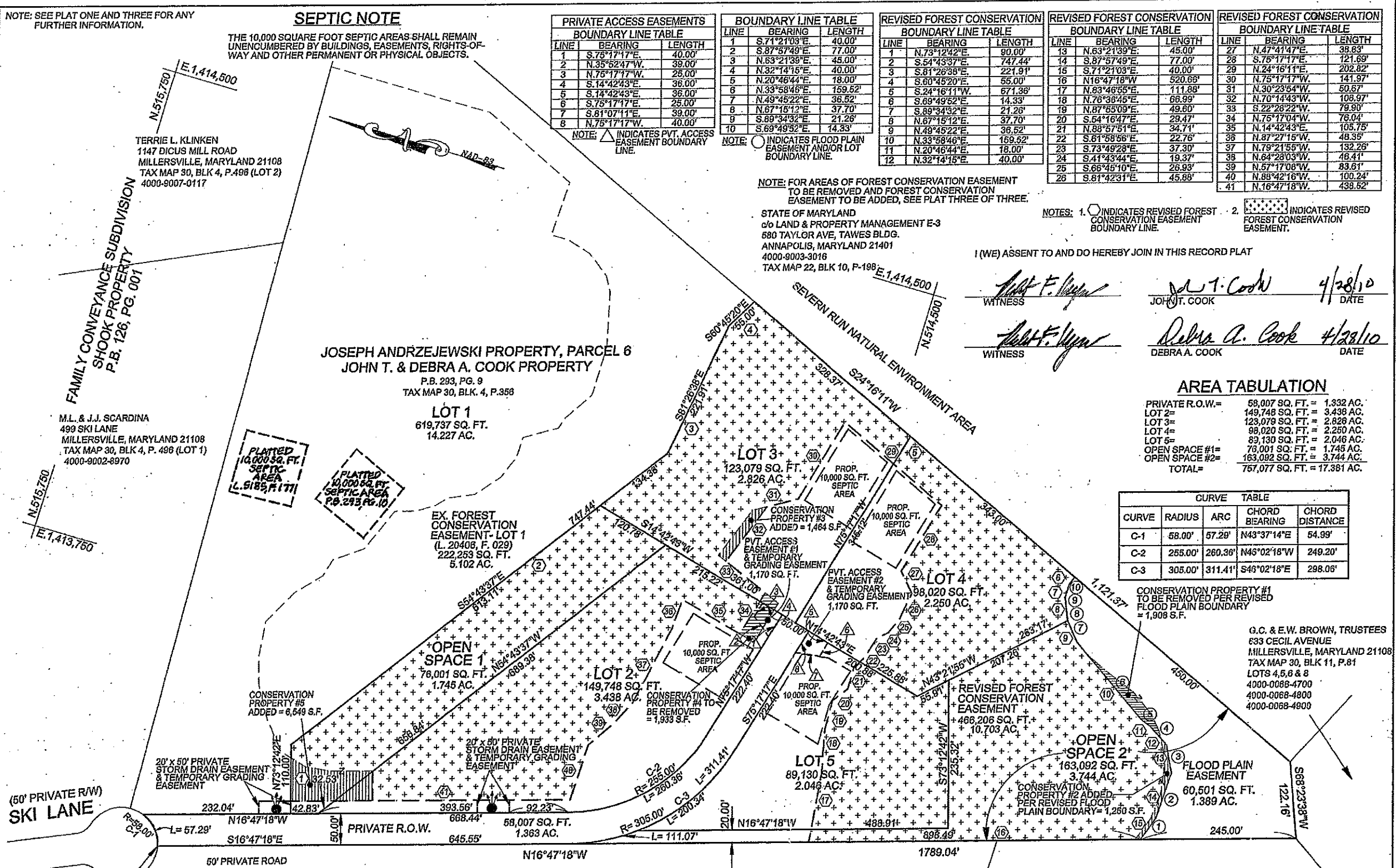
PRIVATE R.O.W. =	58,007 SQ. FT. = 1.332 AC.
LOT 2 =	149,748 SQ. FT. = 3.438 AC.
LOT 3 =	123,079 SQ. FT. = 2.826 AC.
LOT 4 =	98,020 SQ. FT. = 2.250 AC.
LOT 5 =	89,130 SQ. FT. = 2.046 AC.
OPEN SPACE #1 =	76,001 SQ. FT. = 1.745 AC.
OPEN SPACE #2 =	163,092 SQ. FT. = 3.744 AC.
TOTAL =	757,077 SQ. FT. = 17.381 AC.

CURVE TABLE

CURVE	RADIUS	ARC	CHORD BEARING	CHORD DISTANCE
C-1	58.00'	57.29'	N43°37'14"E	54.99'
C-2	255.00'	260.36'	N45°02'18"W	249.20'
C-3	305.00'	311.41'	S46°02'18"E	298.06'

CONSERVATION PROPERTY #1 TO BE REMOVED PER REVISED FLOOD PLAIN BOUNDARY = 1,908 S.F.

G.C. & E.W. BROWN, TRUSTEES
633 CECIL AVENUE
MILLERSVILLE, MARYLAND 21108
TAX MAP 30, BLK 11, P.81
LOTS 4, 5, 6 & 8
4000-0068-4700
4000-0068-4800
4000-0068-4900



LOT 5H LOT 5G LOT 5F LOT 5E LOT 5C LOT 5B

ANDRZEJEWSKI FAMILY CONVEYANCE SUBDIVISION
PLAT BOOK 90, PAGE 13
TAX MAP 30, BLK 4, P.356

APPROVED BY: *[Signature]* 5/10/10
DIRECTOR, ENVIRONMENTAL HEALTH
ANNE ARUNDEL COUNTY DEPARTMENT OF HEALTH

[Signature] 9-13-10
LAIRY R. TOM, PLANNING & ZONING OFFICER

RESERVED NON-BUILDABLE

SUBDIVISION #1981-248, PROJECT #2008-0166-00NF
PLAT TWO OF THREE
JOSEPH ANDRZEJEWSKI PROPERTY, PARCEL 6
JOHN T. & DEBRA A. COOK PROPERTY
BULK PARCEL
TAX MAP 30, BLOCK 04, PARCEL 37
MILLERSVILLE
SITE ZIP CODE 21108

1"=100'
DATE: APRIL 2010
FOURTH DISTRICT, ANNE ARUNDEL COUNTY, MARYLAND

RECORDED IN BOOK _____, PAGE _____, PLAT NO. _____

199703 MSA Ssu 1235 9559-2

RECEIVED FOR RECORD
CIRCLING COURT FOR ANNE ARUNDEL COUNTY
2010 JUN 16 3 24:45

ED BROWN & ASSOCIATES, INC.
LAND SURVEYORS - LAND PLANNERS
DEVELOPMENT CONSULTANTS
1614 RITCHIE HWY., SUITE 301
ARNOLD, MARYLAND 21012
PHONE 410-757-2002, FAX 410-757-2011
Email edbrownassoc@comcast.net