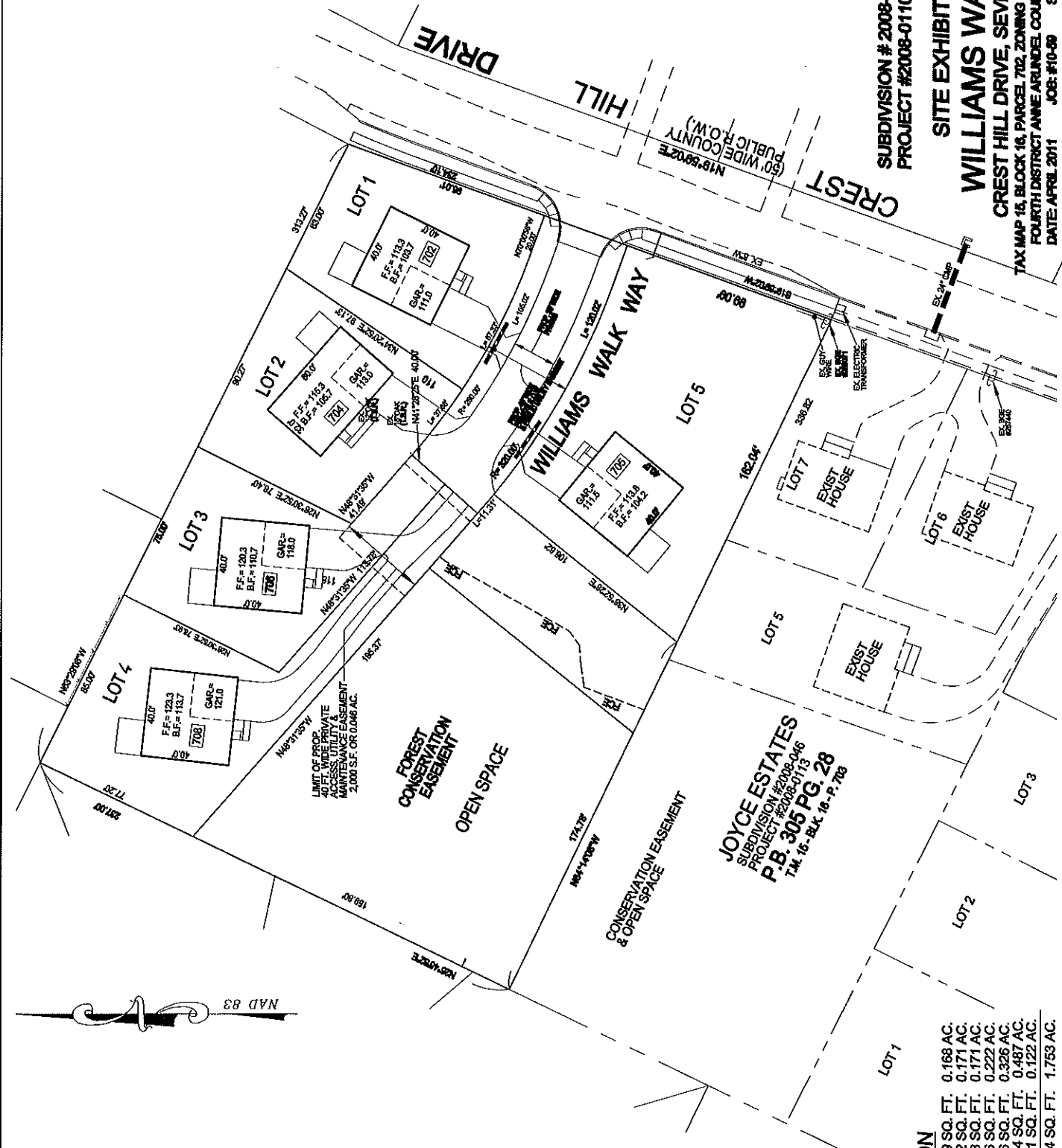


SUBDIVISION # 2008-044  
 PROJECT #2008-0110-00 NF

SITE EXHIBIT

**WILLIAMS WALK**

CREST HILL DRIVE, SEVERN, MD  
 TAX MAP 16, BLOCK 16, PARCEL 762, ZONING R6, ZIP CODE 21144  
 FOURTH DISTRICT ANNE ARUNDEL COUNTY, MARYLAND  
 DATE: APRIL 2011 JOB: #10-69 SCALE: 1/4"=1'-0"



**JOYCE ESTATES**  
 SUBDIVISION #2008-046  
 PROJECT #2008-0113  
 T.M. 16 - BLK. 16 - P. 763

**AREA TABULATION**

LOT 1 (#702) =	7,319 SQ. FT.	0.168 AC.
LOT 2 (#704) =	7,432 SQ. FT.	0.171 AC.
LOT 3 (#706) =	7,448 SQ. FT.	0.171 AC.
LOT 4 (#708) =	9,686 SQ. FT.	0.222 AC.
LOT 5 (#705) =	14,186 SQ. FT.	0.326 AC.
OPEN SPACE =	21,214 SQ. FT.	0.487 AC.
PRIVATE R.O.W. =	5,301 SQ. FT.	0.122 AC.
<b>TOTAL SITE AREA =</b>	<b>76,344 SQ. FT.</b>	<b>1.753 AC.</b>

LIMIT OF PROP. AC. 16.16-046  
 40' WIDE PRIVATE  
 MAINTENANCE EASEMENT  
 2,000 S.F. OR 0.046 AC.

NAD 83