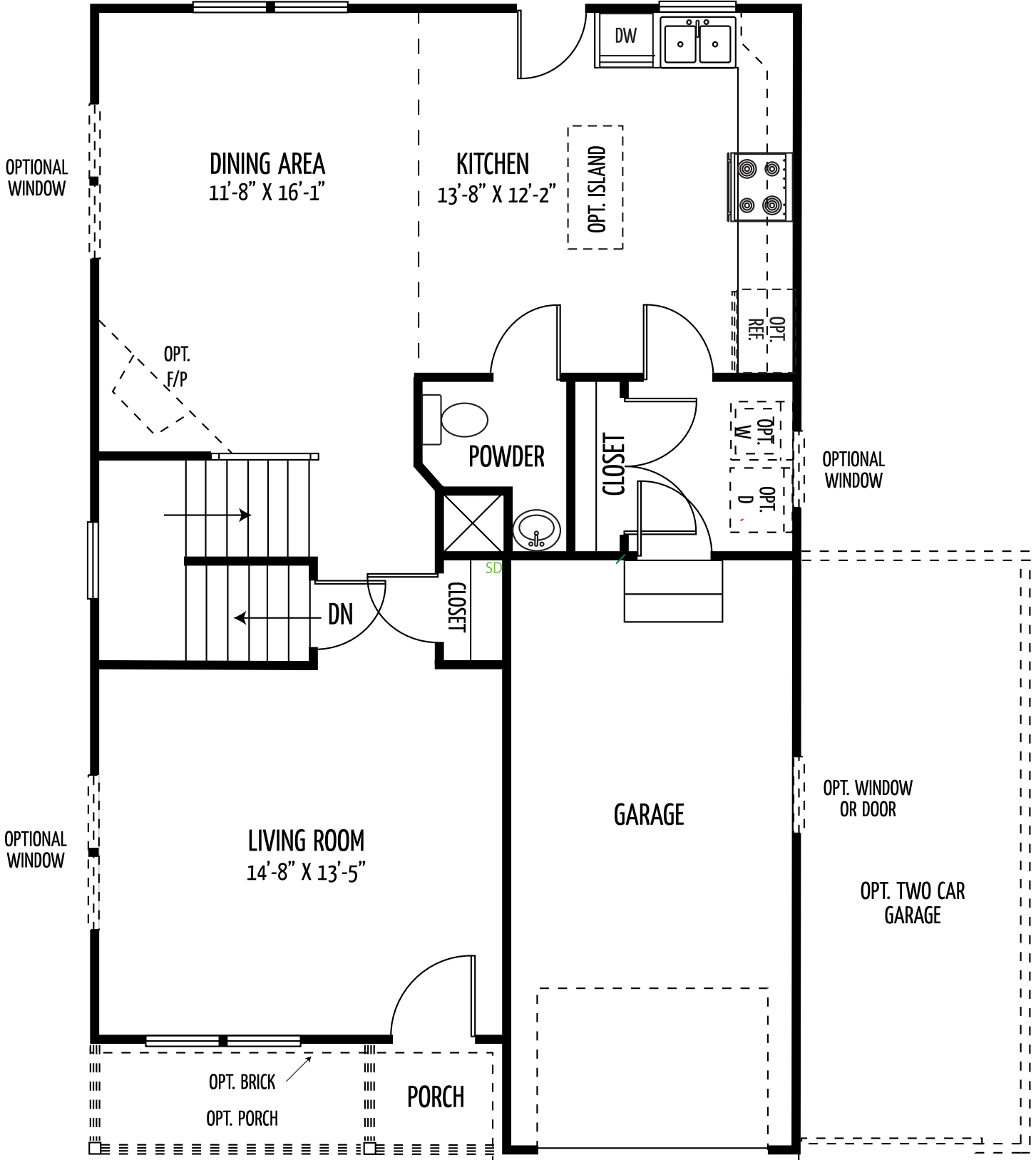


The Harford

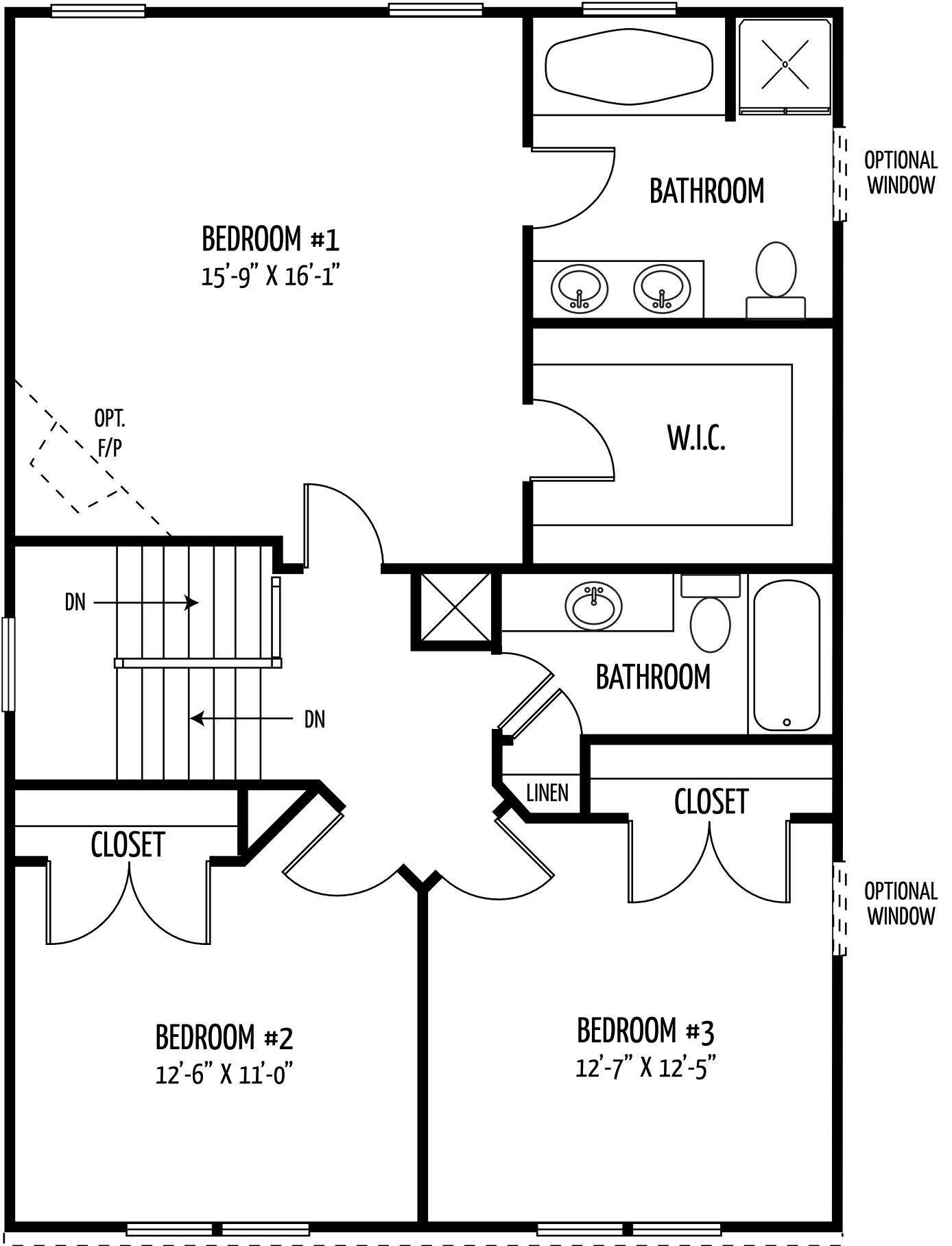
(Approx. 1778 square feet)

Handsome colonial floorplan features 3 bedrooms, 2.5 baths, front porch, coat closet, powder room, open country kitchen with an island, laundry room off the one car garage, master suite with a super bath and walk-in closet. Optional finished basement available.



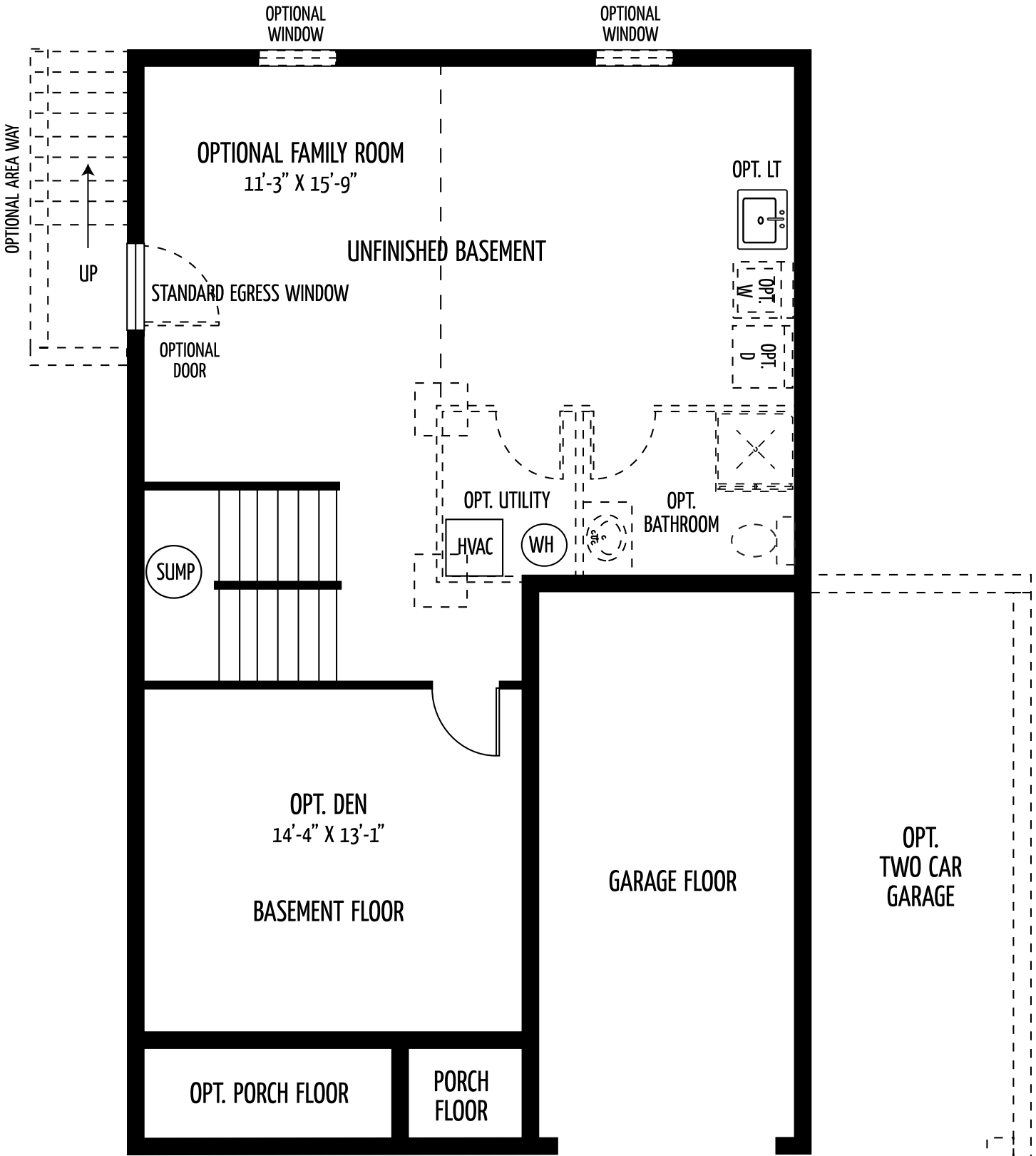


HARFORD FIRST FLOOR



HARFORD SECOND FLOOR

OPT. BRICK



OPTIONAL WINDOW

OPTIONAL WINDOW

OPTIONAL AREA WAY

UP

OPTIONAL FAMILY ROOM
11'-3" X 15'-9"

UNFINISHED BASEMENT

STANDARD EGRESS WINDOW

OPTIONAL DOOR

OPT. LT



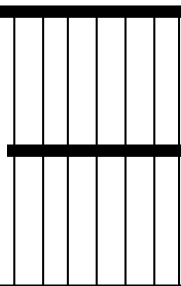
OPT. W

OPT. D

OPT. UTILITY



OPT. BATHROOM



OPT. DEN
14'-4" X 13'-1"

BASEMENT FLOOR

GARAGE FLOOR

OPT. TWO CAR GARAGE

OPT. PORCH FLOOR

PORCH FLOOR