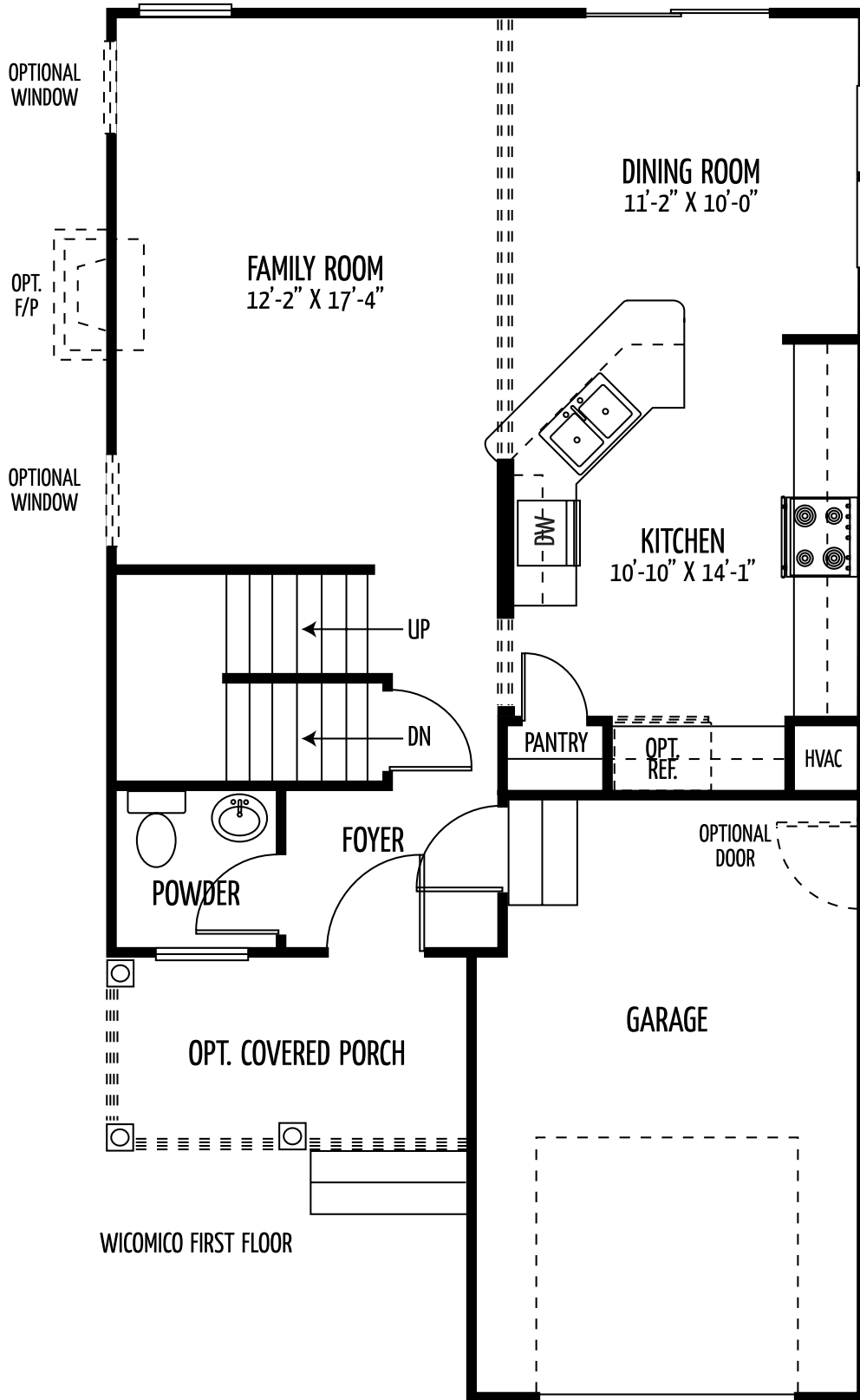


# The Wicomico

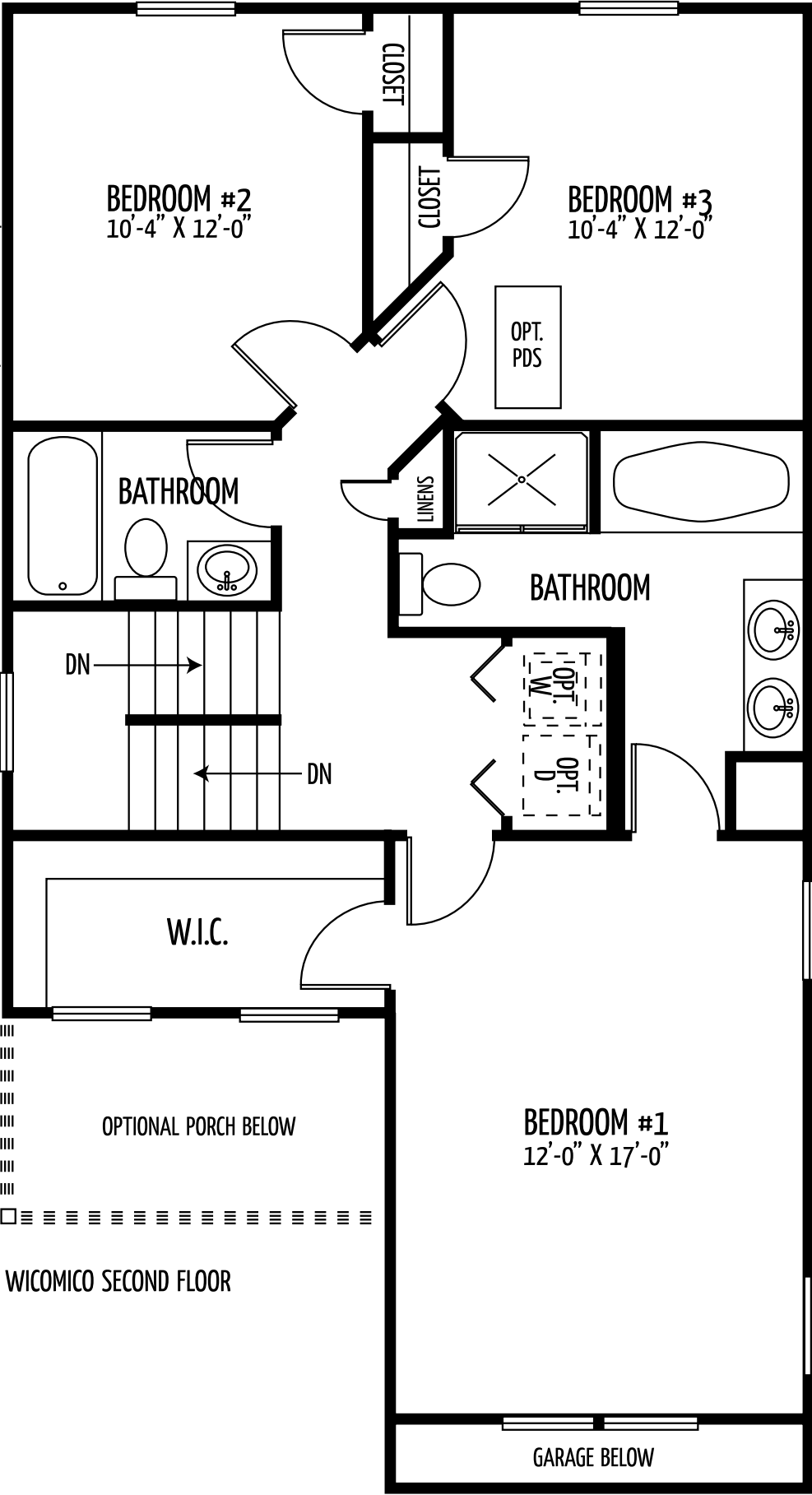
(Approx. 1533 square feet)

Fantastic 3 bedroom 2.5 bath colonial with an open floor plan offers a front porch, 1 car garage, powder room, kitchen with a breakfast bar and pantry, family room, and dining room. Master bedroom includes a walk-in closet and super bath. Bedroom level washer and dryer closet. Optional finished basement available.





OPT. F/P BELOW



OPTIONAL PORCH BELOW

WICOMICO SECOND FLOOR

GARAGE BELOW

