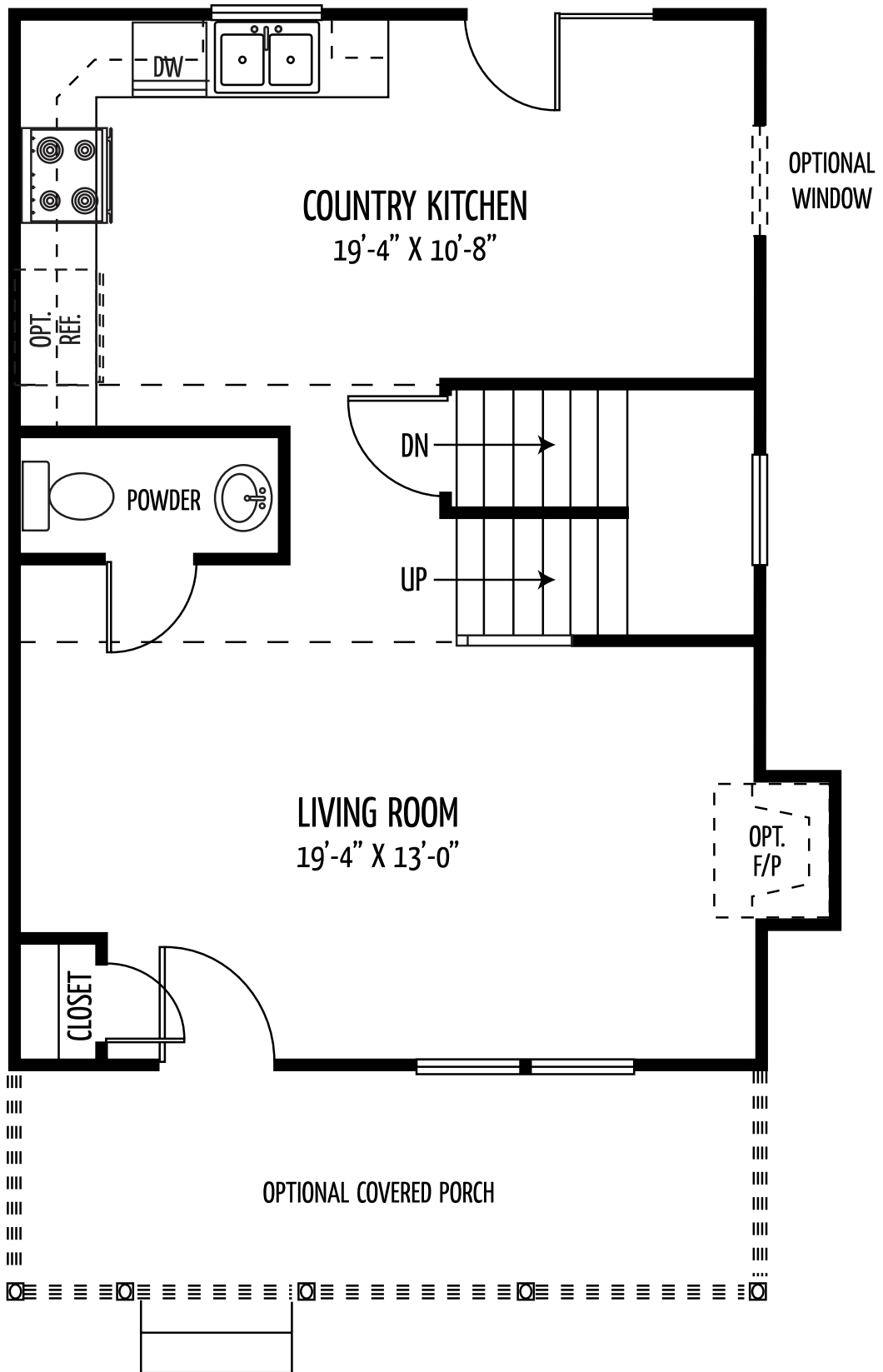


# The Kent

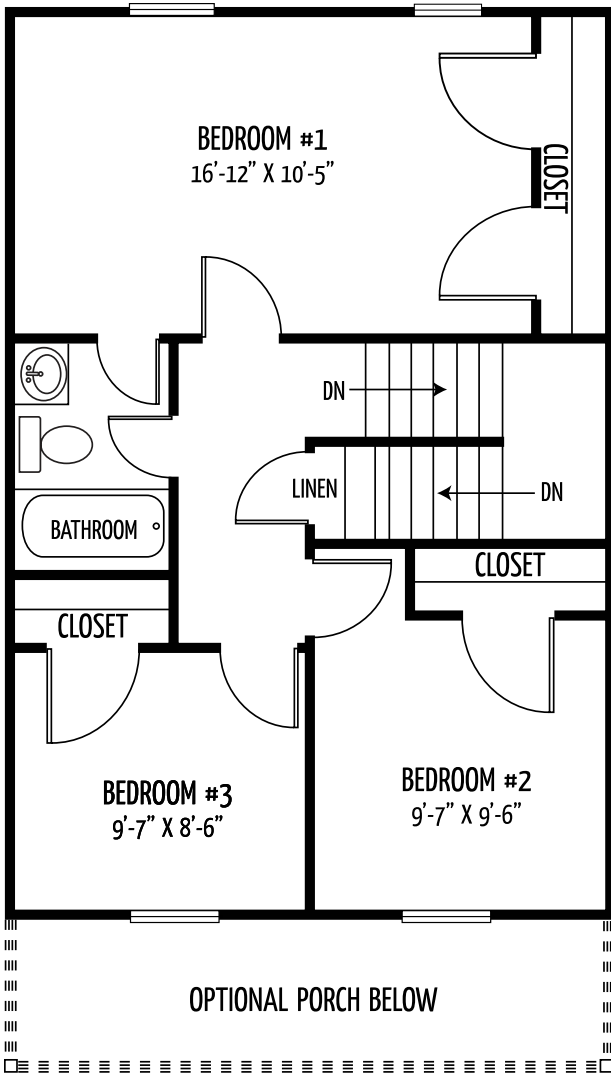
(Approx. 1463 square feet)

Smart design! Three level colonial welcomes you with an open floor plan featuring 3 bedrooms and 1.5 baths. Open floor plan shows standard powder room, kitchen with a breakfast bar, separate dining room, large living room, and master suite with a walk-in closet and optional full bathroom. Optional finished basement available.

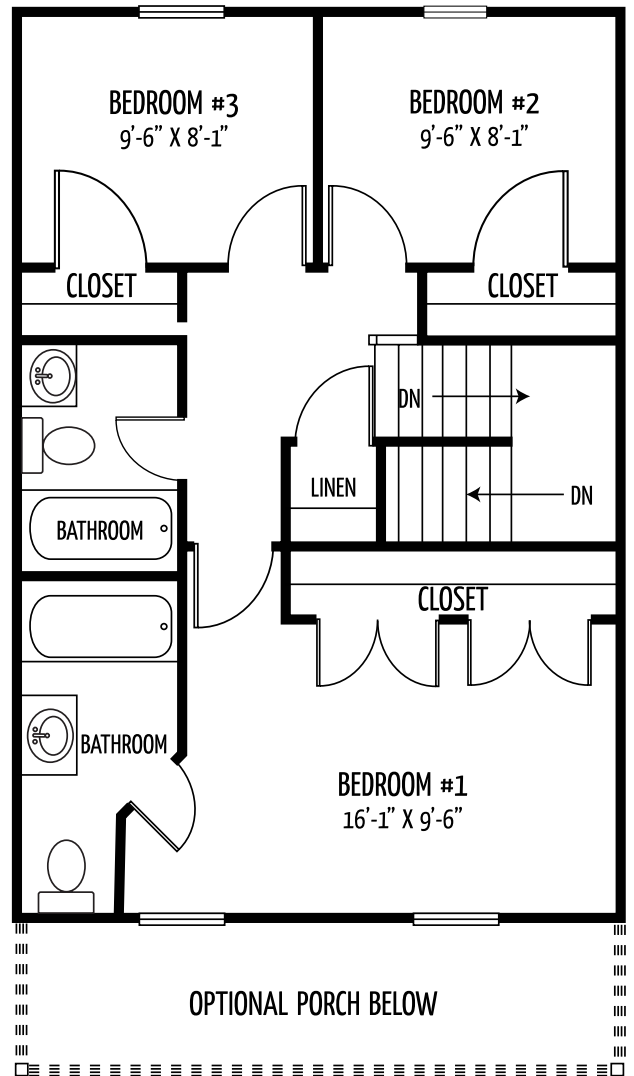




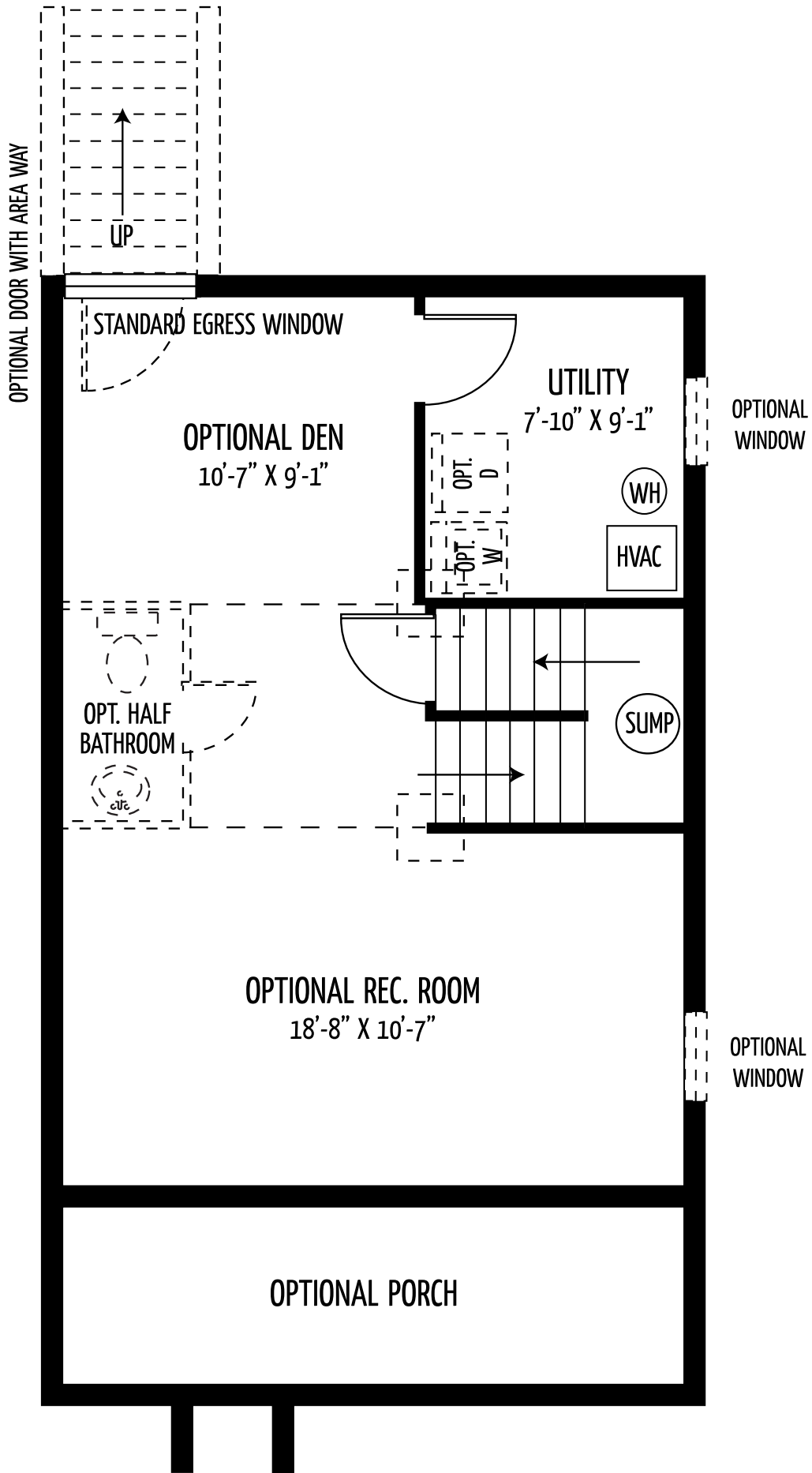
KENT FIRST FLOOR



KENT SECOND FLOOR



KENT OPTIONAL SECOND FLOOR



KENT BASEMENT