



# The Georgetown

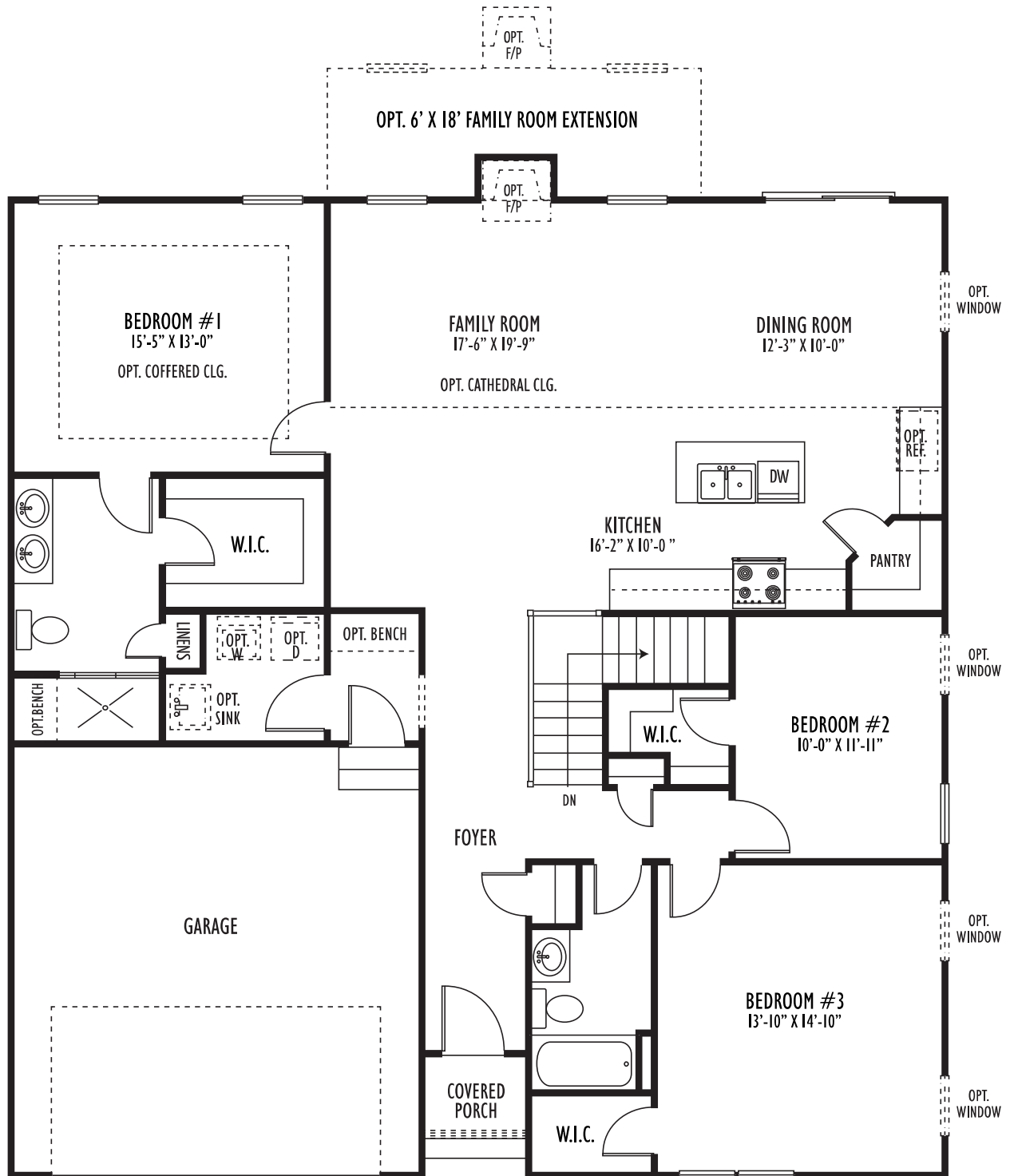


*One-level living at its finest. This three bedroom, two bath rancher includes a two car garage, large washer and dryer utility/mud room on the main level, spacious family room, primary bedroom with a super bath and walk-in closet. Separate dining room. Optional finished basement available.*



*Artist's Renderings - may contain additional options/features.*

[www.AmeriStarHomes.com](http://www.AmeriStarHomes.com)

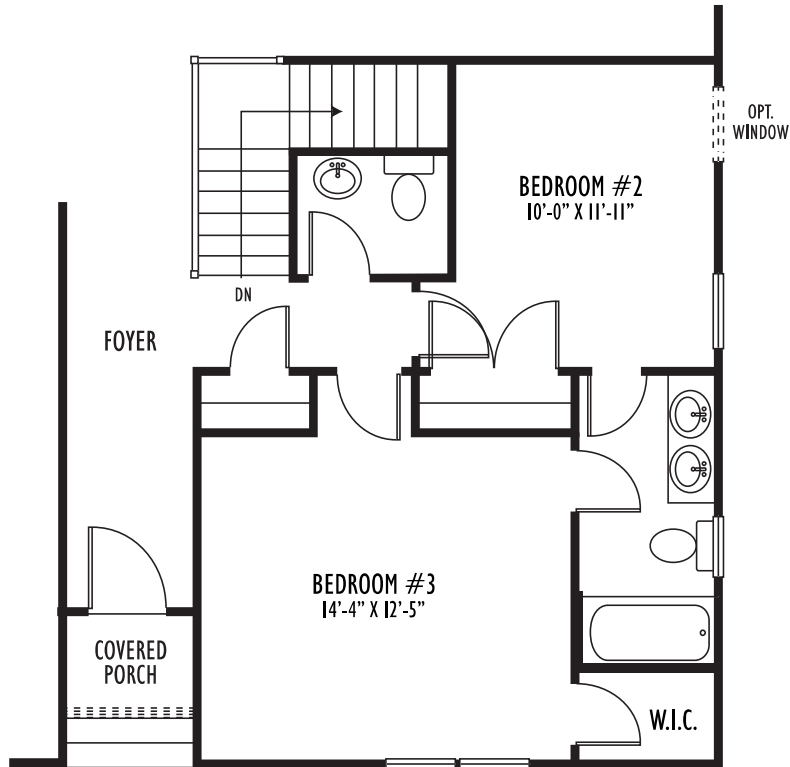


## First Floor

Floor plans and elevations are artist's illustration of home type and may be shown with options and/or may vary in detail from specifications of actual home for various reasons including our continual improvement process.

Room dimensions and square footage are approximate and other available options may not be shown.

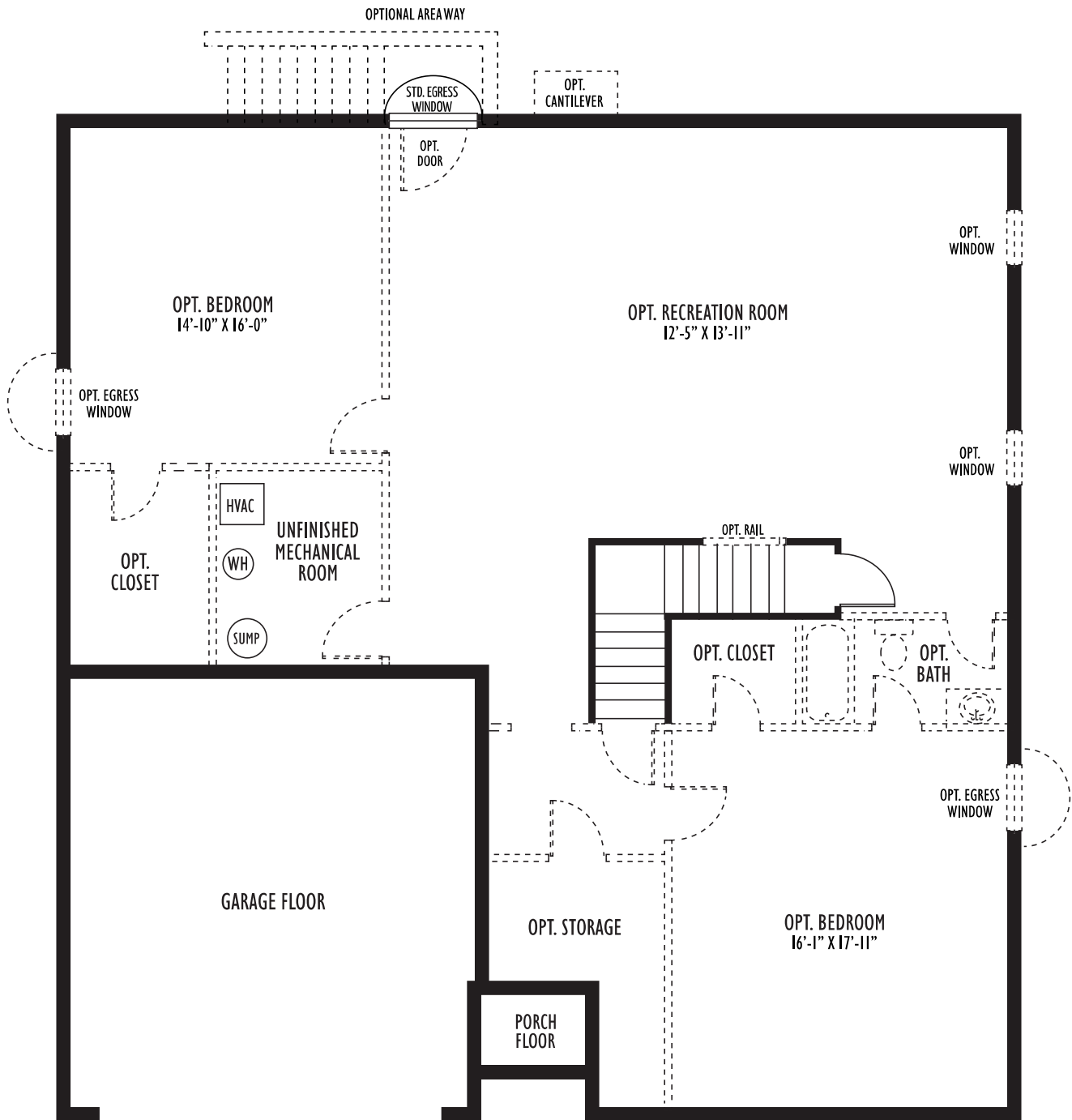
This brochure is for illustrative purposes only and is not part of a legal contract.



*Alternate Plan*

# *The Georgetown*

approximately 1757 square feet



## Basement Floor



MHBR No.  
234, 9394



7411 Ritchie Highway ★ Glen Burnie, MD 21061 ★ Phone: (410) 590-1000 ★ Fax: (410) 590-6220